

FRAMEWORK AGREEMENT FOR CONSULTING SERVICES IN FRAGILE COUNTRIES – KfW

KfW FRAMEWORK AGREEMENT FOR CONSULTING SERVICES IN FRAGILE CONTEXTS

GFA Consulting Group GmbH leads a consortium comprising the partners Conflict Management Consulting CMC (Belgium), MAZURIS SASU (France) and Multiconsult Norge A/S that was awarded the “KfW 2020/0043: Framework Agreement (FWA) for Consulting Services in Fragile Contexts”. The Framework Agreement started at the end of 2021 intended to run for four years.



CONTEXT

The intensity and the duration of international crises have significantly increased in the last years, threatening the accomplishment of development goals of the Agenda 2030. The German Government has responded to this challenge by expanding its political priority towards greater engagement in fragile contexts and it has been translated by the Federal Ministry of Economic Cooperation and Development (BMZ) in projects that focus on the importance of preventive action and the need to consistently orientate development cooperation towards peacebuilding.

This priority has been transferred to an increased number of projects/programs that are operating in a fragile context as well as into the consistent formulation of objectives and goals for intervention. KfW Development

Bank (KfW) has responded to this challenge by expanding its work in fragile contexts into a core competency along with developing the instrument of the Framework Agreement (FWA) for preparatory interventions.

FRAMEWORK AGREEMENT AS NEW INSTRUMENT

The FWA is a new instrument of KfW for the procurement of project preparatory studies and assessments in those countries characterized by crisis and fragility. This particular setting required a change in orientation for the Financial Cooperation (FC), which needed to surpass the “traditional” project cycle and newly adapt to a complex context via streamlining measures. Therefore, KfW has conceived of this new instrument for the preparation and early implementation of projects/programs characterized by a high term of flexibility and adaptability to the specific challenges enabling the provision of standardized high quality information for decision making processes that lead to efficient and sustainable implementation.

The foundation for an efficient and sustainable project/program is laid in its identification and preparation. It is therefore essential to create a solid background comprised of comprehensive analyses of social, economic, legal, cultural, educational and political aspects with the involvement of stakeholders and partners that maximize the sense of collective ownership and sharing. The aim of the FWA, as a new instrument of KfW, is to create the informational background for efficient and sustainable implementation of the financed project/program to achieve the goals of the Agenda 2030.

In a challenging scenario characterized by a precarious situation of the target groups, fast-changing conditions and the need to quickly commit and allocate funds, there is an emergent need for the FWA intended as a “fast track” mechanism to enable:

- The efficient mobilization of experts and to accelerate the preparation of highly qualitative inputs;
- Developing the specialization of consulting services through long-term engagement;
- The provision of clearly structured and standardized analysis for a challenging context;
- The activation of sequential study modules independent of each other.

The KfW FWA envisages releasing about 200 Requests for Offers (RfO) within the four years of implementation of the topics outlined below.

OVERVIEW OF THE SERVICES

The geographical scope recognized by the BMZ encompasses fragile states with an elevated potential for escalation divided into three regions:

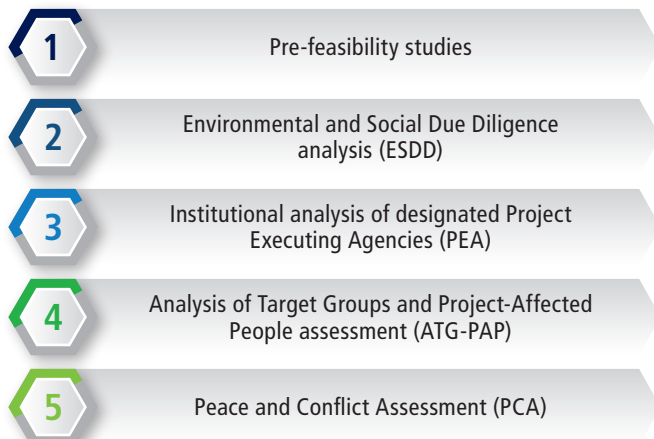
1. Middle East & Afghanistan & Pakistan
2. Africa Francophone
3. Africa Anglophone

Including the following 28 countries & ECOWAS:

1. Afghanistan, Pakistan, Iraq, Jordan, Lebanon, Palestine, Syria, Yemen
2. Burkina Faso, Burundi, Cameroon, Central African Republic, Chad, DR Congo, Guinea, Mali, Niger
3. ECOWAS (as an institution), Ethiopia, Gambia, Guinea-Bissau, Kenya, Liberia, Nigeria, Sierra Leone, Somalia, South Sudan, Sudan, Uganda

The procured services include the following five modules in six sectors: water, energy, transport, health, education and peace building, crisis prevention and promotion of social coherence.

THE SPECIFIC MODULES



1 PRE-FEASIBILITY STUDIES (PRE-FS)
 Pre-feasibility study is the first step of the project cycle, where the future project/program strategy is turned into concepts. It is a complex comprehensive analysis of information from multiple sources: political, economic, social, technological and legal. It is based on guidelines/reporting requirements laid out by KfW directives and formulated in specific tool/instrument templates, which are used as standard models for the Pre-feasibility studies that include country situational analysis, stakeholder mapping, risk analysis etc.

2 ENVIRONMENTAL AND SOCIAL DUE DILIGENCE ANALYSIS (ESDD)
 In order to achieve sustainable goals, the ESDD analysis needs to be closely connected with the Pre-Feasibility study. This analysis is based on standard tools/instruments and requires a high level of communication

and exchange of information with the PEA, stakeholders, beneficiaries, community representatives etc. It is fundamentally the identification of synergies with other modules and assessments as the ATG-PAP and PCA, enabling the identification of a comprehensive analysis of all foreseeable environmental, social, health and safety aspects of the proposed projects.

3 INSTITUTIONAL ANALYSIS OF DESIGNATED PROJECT EXECUTING AGENCIES (PEA)
 The Project Executing Agency assumes an important role in managing all aspects of the project/program. Therefore, this module intends to analyze its capacities and support needs, reviewing its legal and institutional framework as well as its capacity and ability to implement the project/program. The analysis will also outline the capacity development needs of the institution. This analysis is built upon a standard template for data and information collection.

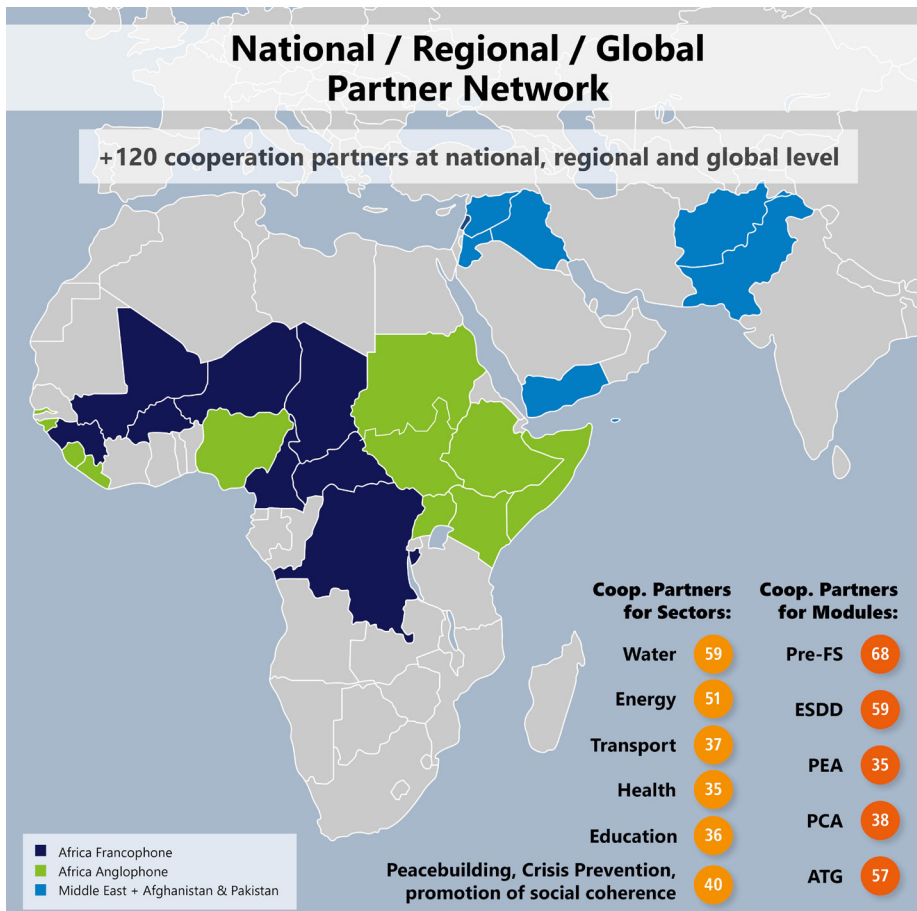
4 ANALYSIS OF TARGET GROUPS AND PROJECT-AFFECTED PEOPLE (ATG-PAP)
 The aim of the Analysis of Target Groups and Project-Affected People is to identify and describe potential beneficiaries, to analyze development constraints and opportunities along with developing strategies to maximize potentials and mitigate negative impacts. It should be built on findings from the other modules and rely on participation and ownership of the respected target group.

5 PEACE AND CONFLICT ASSESSMENT (PCA)
 The Peace and Conflict Assessment ensures that the future projects/programs are designed and implemented considering underlying conflict factors and follow the do-not-harm principle. It is a systematic research focusing on a specific region or thematic sector and it is closely linked to the ATG-PAP. The assessment analyzes the conflict drivers, their impact on the achievement of the project/program goals and establishes itself as a monitoring tool for prompt alignment with the project/program logic.

EXPERTS AND REGIONAL PARTNER'S NETWORK

In order to provide such services the consortium led by GFA relies on highly specialized international, regional and national experts but also on a network of global, regional and national partners that ensure local and logistical support during the implementation of the specific assignments (RfO). The synergies of international and local/national experts are fundamental for guaranteeing the ownership and realistic comprehensive analysis of the service modules.

During field assignments the international experts will be paired with national experts, who will be responsible for the translation of surveys, interviews and focus group discussions; but also to ensure the ownership and the know-how within the service module.



Are you interested in joining our pool of international/regional/local experts or in becoming our partner in a specific country?

Please use the CV template provided on the [Website](#) and send us your CV to: kfw-fwa@gfa-group.de

WHAT ARE WE LOOKING FOR AND WHAT WE OFFER

The GFA consortium is based on a set of values that focus on excellence, innovation, responsibility, integrity and human resources. The experts working for us are well known as quality and performance drivers in all sectors of the cooperation development. Due to the geographically fragile contexts and the broad scope of its modules, the GFA consortium is looking forward to expand its human resources network.

We provide our experts with a comprehensive package of services which enables them to focus on their technical assignment and enjoy the benefits of working for a highly respected company.

TECHNICAL SERVICES

- Guidelines and supervision from senior experts
- Access to libraries and database resources
- Knowledge capitalization
- International networks of your sector of intervention
- Support in formatting/proofreading of any deliverable
- Securing privacy according to the EU General Data Protection Regulation (EU GDPR)

BACKSTOPPING SERVICES DURING PREPARATION AND IMPLEMENTATION OF MISSIONS

- Support for administration issues
- Access to telephone and e-mail advice during the mission
- Strong security and safety measures
- Local technical support staff
- Interpreters/translators
- Broad range of platforms to facilitate communication and sharing of information in particular remote site visits due to pandemic induced inaccessibility

EXPERT SERVICES

- Competitive fee rates
- Appropriate insurance arrangements
- Covering of costs for COVID-19 tests
- Multiple opportunities for consultancy

CONTACT

GFA Consulting Group GmbH ▪ Christian Caspar
 Phone: +49 40 60306-718
 E-mail: christian.caspar@gfa-group.de
www.gfa-group.de