



VIETNAMESE - GERMAN COOPERATION

gtz



Sustainable Management of Natural Resources in Central Vietnam (SMNR-CV)

Overview Project Presentation





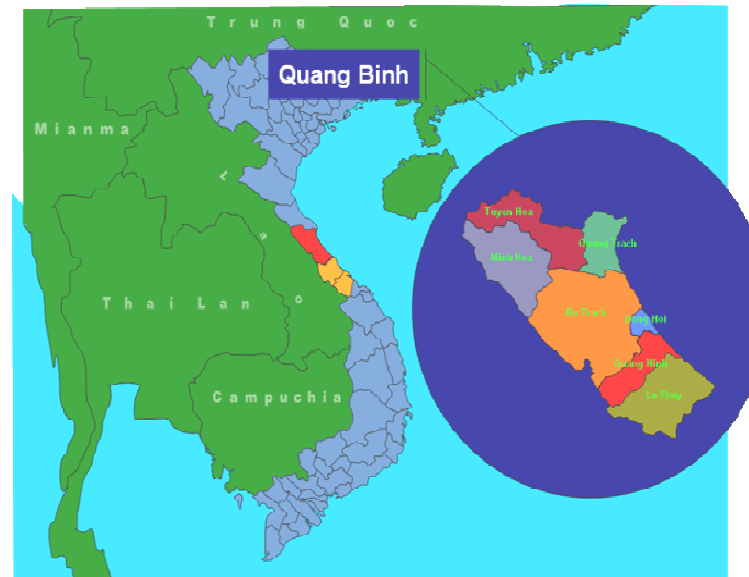
PROJECT AREA

gtz

North-Central Vietnam

Quang Binh Province (Implementation area)

Quang Tri and T.T. Hue provinces (Dissemination area)





Objective and Duration

gtz

Overall Objective:

The stakeholders in the project region manage their natural resources in a sustainable way.

Project Duration: 6 years

Phase I: 04.2004 - 03.2007

Phase II: 04.2007 - 03.2010





Owner and Implementation

gtz

Project Owner / Executing Agency:

People's Committee of Quang Binh Province

(Project Steering and Management Board)

Executing Agencies:

- **German Technical Cooperation (GTZ)**
(implemented by GFA Consulting Group)
- **German Development Service (DED)**





Impact Chain

gtz

Attribution Gap

Indirect Benefits:

- Living conditions in the mountainous areas improved
- Natural resources managed in a sustainable way

Direct Benefits:

- Increased participation of poor target groups in market economy, planning and decision making processes, needs-based service delivery, more equal and secure access to productive resources, capacity strengthening in sustainable resource management as well as more efficient public and private service delivery
- Strategies and implementation guidelines are in effect that promote the sustainable use of natural resources as well as the inclusion on equal terms of women and ethnic minorities.

Use of Outputs:

- Partners on provincial, district and commune levels apply and disseminate the tested models and methods, implement strategies and guidelines, and use their enhanced capacities to more effectively support target groups.
- Target groups use their improved skills sustainably manage their agricultural and forest resources, to take advantage of additional income opportunities and to adapt to changing market conditions.

Outputs: See Operational Plans

Activities: see Operational Plans





Impact Indicators

gtz

1. Until 12/2009, participatory methods for socio-economic development planning (SEDP) and for agricultural extension (PAEM) are officially recognized by provincial guidelines and applied in all rural communes and districts in the core province of Quang Binh.
2. In the project area, the additional net income of households and small enterprises involved in the promotion of value chains increases by at least 10% annually.
3. In Quang Binh, improved provincial guidelines are issued on forest protection (until 12/2007), on forest land allocation (until 06/2008) and on community forestry (until 06/2009), and are applied in all rural districts by the relevant stakeholders in the protection and sustainable management of forest resources.
4. In the pilot communes supported by the project, the percentage of households below the poverty line decreases annually by at least 4.5% (referring to data of DOLISA according to new poverty definition of 2006).





Work Area 1

gtz

1. Participatory Socio-economic Development Planning (SEDP) and Local Economic Development (LED)



Link to ►► [Clip Development Planning](#)

See software &
data base by



VDP Manager

ded
Deutscher
Entwicklungsdienst
Vietnam

GFA
Consulting Group





Work Area 2

gtz

1. Participatory Agricultural Extension (PAEM) and Promotion of Value Chains



Link to ►► [Clip Agriculture](#)
►► [Clip Value Chains](#)





Work Area 3

gtz

3. Community Forestry

- Participatory Land Use Planning - Forest Land Allocation (PLUP-FLA)
- Forest Protection and Development Regulations (FPDR)
- Community-based Forest Management (CBFM)

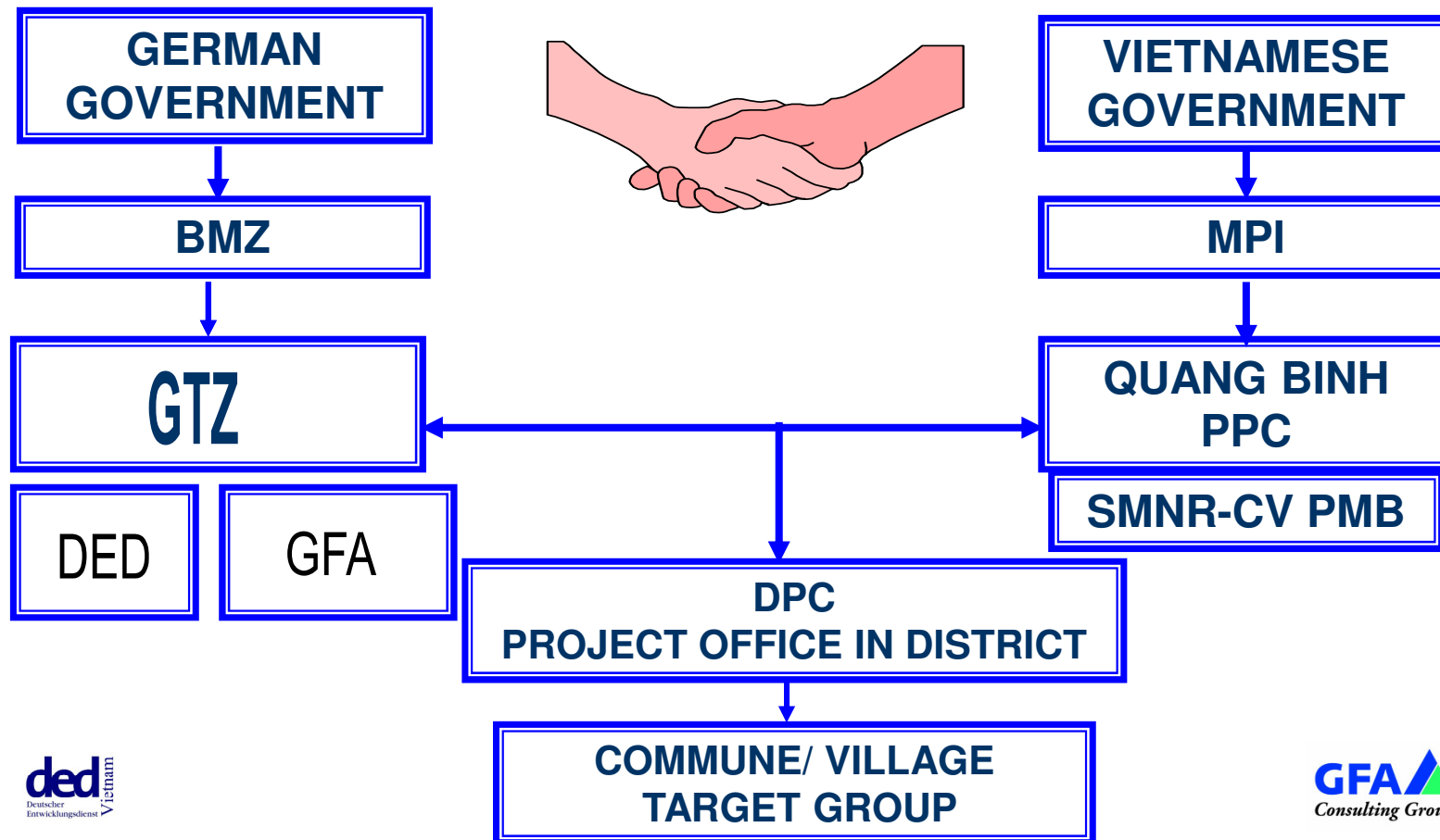
Link to ►► [Clip Forestry](#)





Cooperation

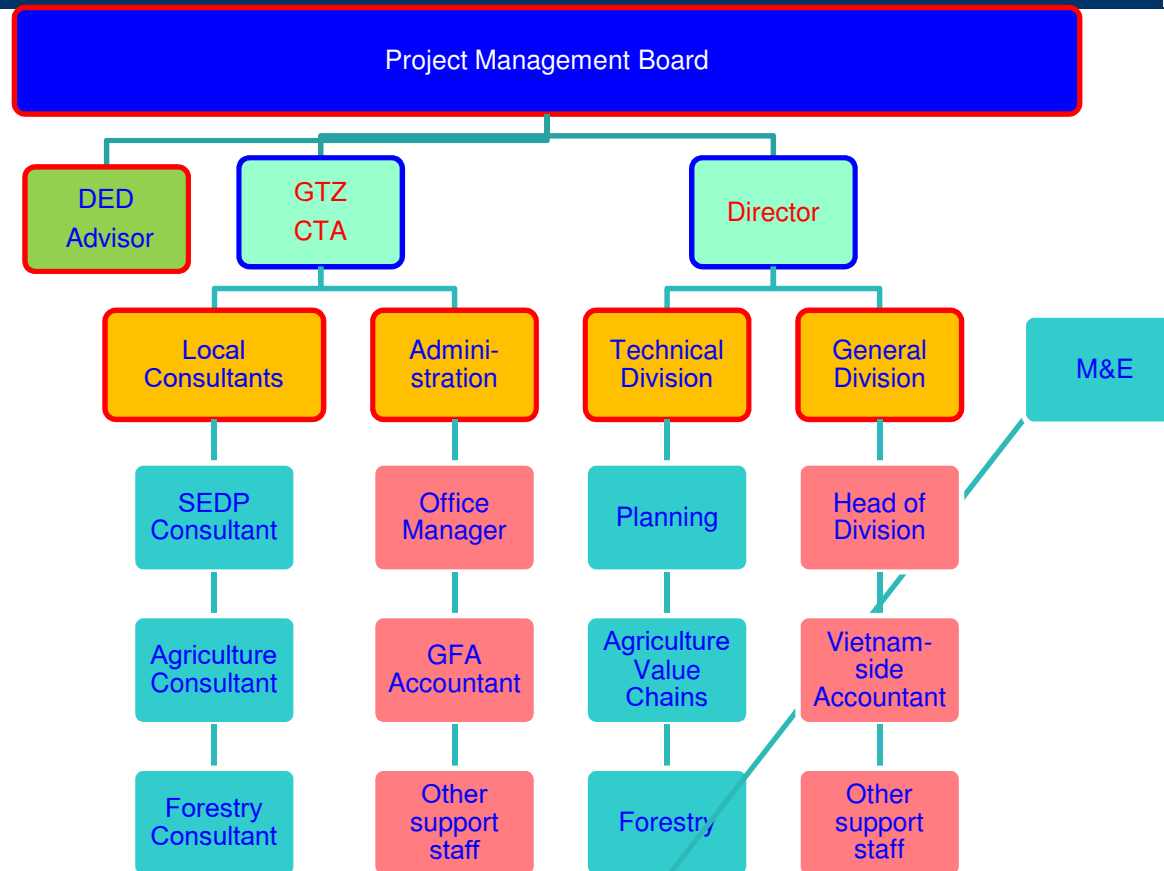
gtz





Organization

gtz





Implementation Partners

gtz

1. Department of Planning and Investment (DPI)
Participatory Planning Group (PPG)
2. Department of Agriculture and Rural Development (DARD)
Provincial Agricultural Consultative Group (PACG)
Provincial Forestry Consultative Group (PFCG)
3. Other Line Departments and Private Sector
Value Chain Promotion Group (VC Group)
Producer Associations (apiculture, sericulture)





Contributions to Sustainable Development

gtz

1. *Social and economic sustainability*

- *Poor people in the rural mountainous areas are enabled to participate in planning and decision making related to public budget allocations and to the implementation of their own development plans.*
- *Local farmers have improved skills to participate in the growing marketing economy with equal opportunities for different ethnic groups , men and women.*
- *Public and private partners provide efficient services for sustainable resource use, income generation and small business development.*





Contributions to Sustainable Development

gtz

2. Ecological and institutional sustainability:

- *Wide-spread application of innovative methods introduced by the project leads to more efficient and ecologically sustainable use of agricultural and forestry resources by all rural households (roll-out).*
- *Relevant partner organizations on all levels have integrated the innovative approaches introduced by the project into their procedures and daily routines (institutionalization).*





gtz

**THANK YOU
FOR YOUR ATTENTION!**

